

Anti-CA3 Antibody
Catalog # ABO10758**Specification**

Anti-CA3 Antibody - Product Information

Application	WB, IHC-P
Primary Accession	P07451
Host	Rabbit
Reactivity	Human, Mouse, Rat
Clonality	Polyclonal
Format	Lyophilized

Description

Rabbit IgG polyclonal antibody for Carbonic anhydrase 3(CA3) detection. Tested with WB, IHC-P in Human;Mouse;Rat.

Reconstitution

Add 0.2ml of distilled water will yield a concentration of 500ug/ml.

Anti-CA3 Antibody - Additional Information

Gene ID 761

Other Names

Carbonic anhydrase 3, 4.2.1.1, Carbonate dehydratase III, Carbonic anhydrase III, CA-III, CA3

Calculated MW

29557 MW KDa

Application Details

Immunohistochemistry(Paraffin-embedded Section), 0.5-1 µg/ml, Rat, Mouse, By Heat

Western blot, 0.1-0.5 µg/ml, Human

Subcellular Localization

Cytoplasm.

Tissue Specificity

Muscle specific.

Protein Name

Carbonic anhydrase 3

Contents

Each vial contains 5mg BSA, 0.9mg NaCl, 0.2mg Na₂HPO₄, 0.05mg Thimerosal, 0.05mg NaN₃.

Immunogen

A synthetic peptide corresponding to a sequence at the N-terminus of human CA3 (2-20aa AKEWGYASHNGPDHWHELF), different from the related mouse and rat sequences by two amino acids.

Purification

Immunogen affinity purified.

Cross Reactivity

No cross reactivity with other proteins

Storage

At -20°C for one year. After reconstitution, at 4°C for one month. It can also be aliquotted and stored frozen at -20°C for a longer time. Avoid repeated freezing and thawing.

Anti-CA3 Antibody - Protein Information

Name CA3 {ECO:0000303|PubMed:9651514, ECO:0000312|HGNC:HGNC:1374}

Function

Reversible hydration of carbon dioxide.

Cellular Location

Cytoplasm.

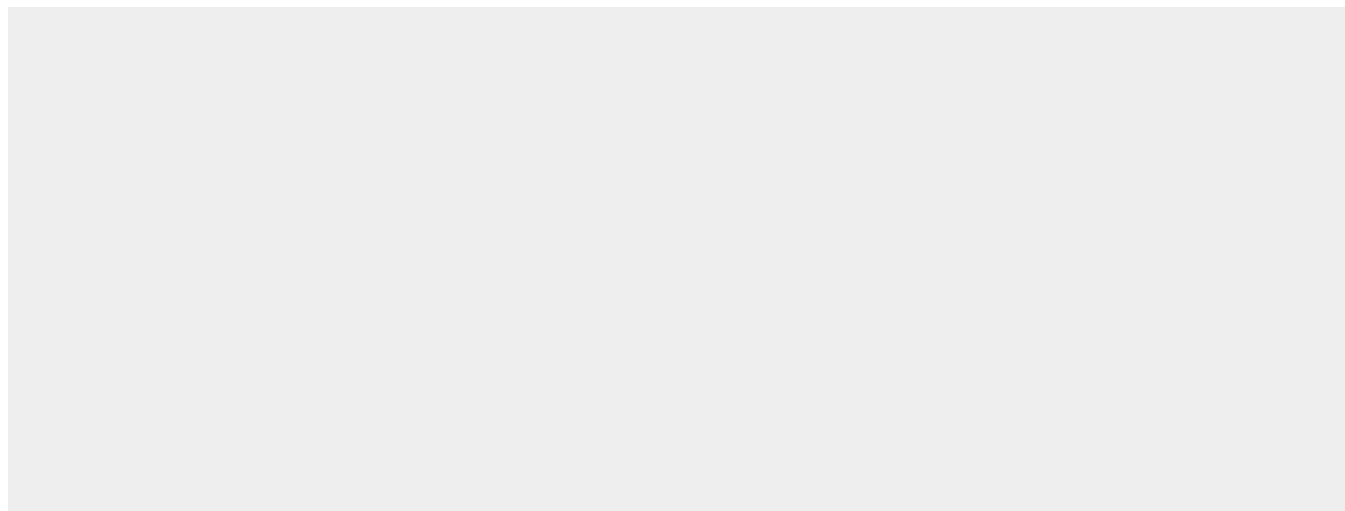
Tissue Location

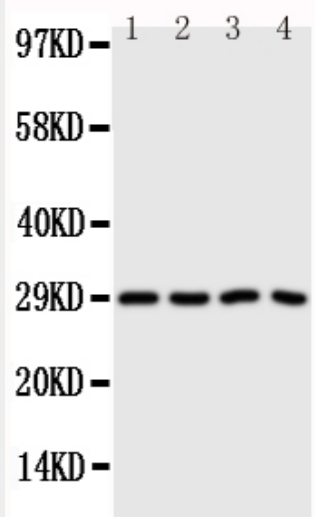
Muscle specific.

Anti-CA3 Antibody - Protocols

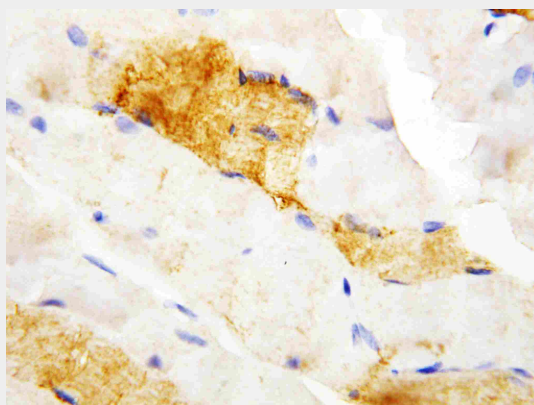
Provided below are standard protocols that you may find useful for product applications.

- [Western Blot](#)
- [Blocking Peptides](#)
- [Dot Blot](#)
- [Immunohistochemistry](#)
- [Immunofluorescence](#)
- [Immunoprecipitation](#)
- [Flow Cytometry](#)
- [Cell Culture](#)

Anti-CA3 Antibody - Images



Anti-CA3 antibody, ABO10758, Western blotting
Lane 1: SMMC Cell Lysate
Lane 2: HELA Cell Lysate
Lane 3: SW620 Cell Lysate
Lane 4: SCG Cell Lysate



Anti-CA3 antibody, ABO10758, IHC(P)
IHC(P): Rat Skeletal Muscle Tissue

Anti-CA3 Antibody - Background

Carbonic anhydrase III(CA3) is an enzyme that in humans is encoded by the CA3 gene. CA3 is a member of a multigene family(at least six separate genes are known) that encode carbonic anhydrase isozymes. The gene spans 10.3 kb and contains seven exons and six introns. Using a cDNA clone of the CA3 gene in the study of human-rodent hybrids, the gene was mapped to chromosome 8 which carries a cluster of CA genes. CA3 is found in high concentration in muscle. CA3 is used in conjunction with creatine kinase detection of the carrier state for Duchenne muscular dystrophy.